

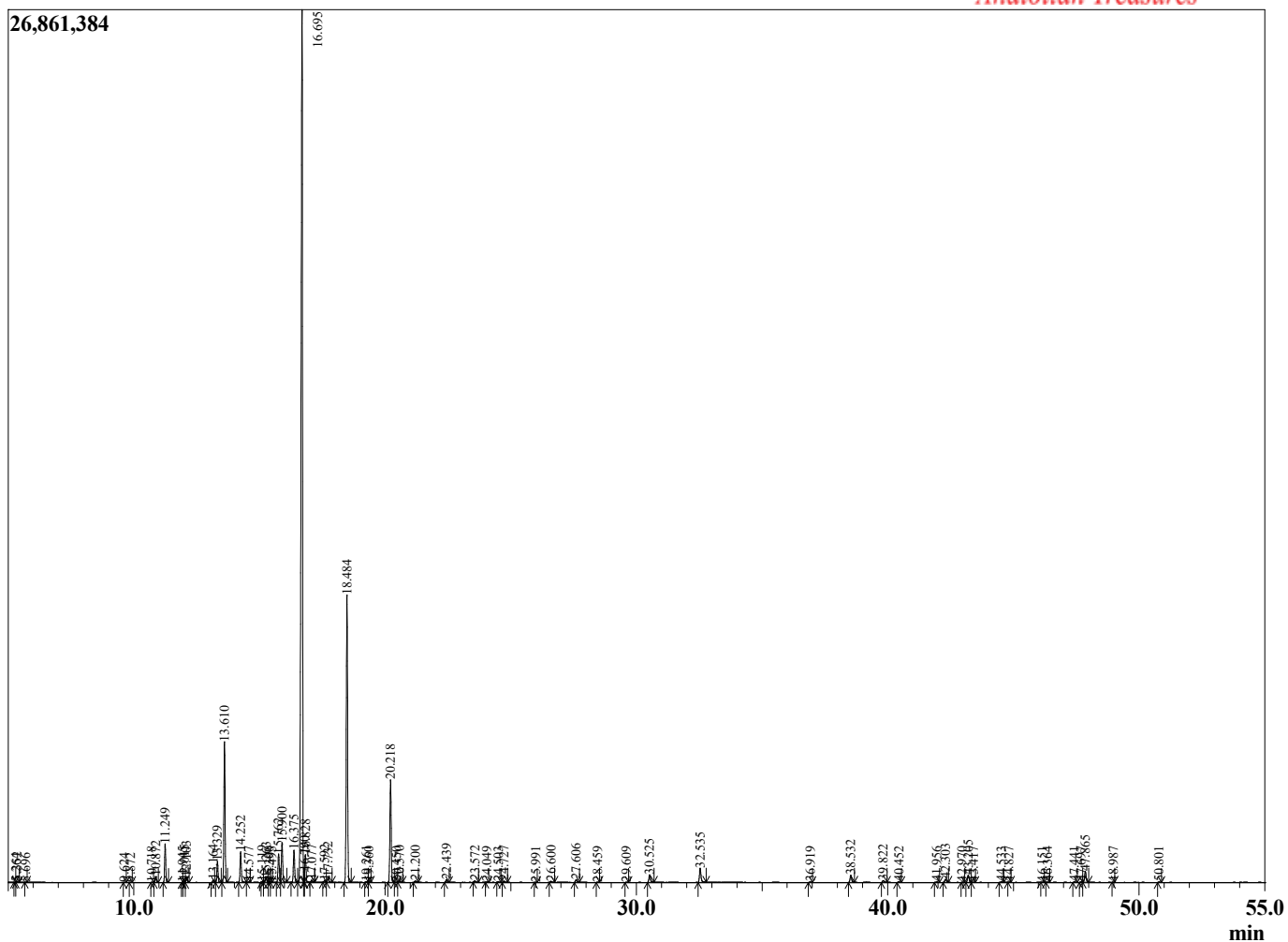
Sample Information

Sample Type : Essential Oil
 Sample Name : Citrus aurantifolia
 Injection : 0.10
 Volume :

Lime Expressed
 Lot#MEH14-HK
 Country: Mexico



Chromatogram Citrus aurantifolia



R.Time	Name	Area%
5.264	Limediene isomer	0.01
5.352	Limediene isomer	0.04
5.696	Limediene isomer	0.00
9.624	Nonane	0.01
9.872	Bornylene	0.01
10.718	Tricyclene	0.01
10.872	alpha-Thujene	0.27
11.249	alpha-Pinene	1.76
11.945	Unidentified	0.01
12.015	alpha-Fenchene	0.09
12.103	Camphene	0.27
13.164	Bois de Rose oxide	0.11
13.329	Sabinene	1.04
13.610	beta-Pinene	6.92
14.252	Myrcene	1.55
14.577	Unidentified	0.02
15.119	Pseudolimonene	0.04
15.263	alpha-Phellandrene	0.27
15.390	delta-3-Carene	0.01
15.495	Unidentified	0.01
15.762	1,4-Cineole	1.51
15.900	alpha-Terpinene	2.00
16.375	para-Cymene	1.74
16.695	Limonene	54.62
16.790	beta-Phellandrene	0.31
16.828	1,8-Cineole	1.46
17.077	cis-beta-Ocimene	0.11
17.592	2,2-Dimethyl-5-[(1E)-1-methyl-1-propenyl]tet	0.10
17.732	trans-beta-Ocimene	0.27
18.484	gamma-Terpinene	15.23
19.261	cis-Linalool oxide (furanoid)	0.05
19.360	Pinol	0.02
20.218	Terpinolene	5.61
20.450	Fenchone	0.02
20.570	para-Cymenene	0.09
21.200	Linalool	0.10
22.439	endo-Fenchol	0.14
23.572	Terpin-3-en-1-ol	0.09
24.049	Epoxyterpinolene	0.02
24.503	cis-beta-Terpineol	0.03
24.727	Citronellal	0.08
25.991	Borneol	0.01
26.600	Terpinen-4-ol	0.07
27.606	alpha-Terpineol	0.17
28.459	Decanal	0.01
29.609	Nerol	0.02
30.525	Neral	0.48
32.535	Geranial	0.90
36.919	delta-Elemene	0.03
38.532	Neryl acetate	0.46
39.822	Geranyl acetate	0.13
40.452	beta-Elemene	0.04
41.956	cis-alpha-Bergamotene	0.03
42.303	beta-Caryophyllene	0.21
42.970	Unidentified	0.01
43.205	trans-alpha-Bergamotene	0.48

R.Time	Name	Area%
43.417	Unidentified	0.02
44.533	trans-beta-Farnesene	0.04
44.827	epi-beta-Santalene	0.01
46.151	Germacrene D	0.01
46.364	trans-beta-Bergamotene	0.02
47.441	alpha-Bisabolene	0.04
47.697	trans,trans-alpha-Farnesene	0.03
47.865	beta-Bisabolene	0.70
48.987	Unidentified	0.01
50.801	Germacrene B	0.03
		100.00